

Map Number	Route	County	Route	Begin MP	To MP	From	TO	Length	Width	Treatment	Map SY	Gal Seal	Markings Present
1	SR 1358 - Shinn Farm Rd	080-Rowan	40001358	0.00	1.15	IREDELL CO	NC 152	1.15	20	Seal - Double and Fog Seal	13,430	6,715	Yes
2	SR 1362 - Avon Freeze Rd	080-Rowan	40001362	0.00	1.40	SR 1360 Enochville Sch Rd	SR 1363 Wright Rd	1.40	20	Seal - Mat & Seal w/ Fog	16,430	13,144	Yes
3	SR 1552 - Jackson Rd	080-Rowan	40001552	0.00	4.13	SR 1549 Bradshaw Rd	NC 152	4.13	16	Seal - Mat & Seal w/ Fog	38,760	31,008	Yes
4	SR 1554 - Corriher Springs Rd	080-Rowan	40001554	0.00	3.16	SR 1350 Enochville Ave	SR 1552 Jackson Rd	3.16	16	Seal - Mat & Seal w/ Fog	29,620	23,696	Yes
5	SR 1555 - Corriher Springs Rd	080-Rowan	40001555	0.00	1.89	SR 1552 Jackson Rd	NC 152	1.89	16	Seal - Mat & Seal w/ Fog	17,710	14,168	Yes
6	SR 1843 - Air Park Dr	080-Rowan	40001843	0.00	0.59	NC 150	EOM	0.59	20	Seal - Double and Fog Seal	6,920	3,460	No
7	SR 2133 - Beagle Club Rd	080-Rowan	40002133	0.00	1.58	SR 1002 Bringle Ferry Rd	SR 1004 Stokes Ferry Rd	1.58	20	Seal - Mat & Seal w/ Fog	18,530	14,824	Yes
8	SR 2135 - Poole Rd	080-Rowan	40002135	0.80	2.72	SR 2136 Agner Rd	SR 2134 Providence Ch Rd	1.92	18	Seal - Double and Fog Seal	20,280	10,140	Yes
9	SR 2136 - Agner Rd	080-Rowan	40002136	0.00	3.30	SR 1004 Stokes Ferry RD	SR 1002 Bringle Ferry Rd	3.30	20	Seal - Double and Fog Seal	38,720	19,360	Yes
10	SR 2137 - Shore Acres	080-Rowan	40002137	0.00	1.12	SR 2136 Agner Rd	EOM	1.12	18	Seal - Double and Fog Seal	11,810	5,905	Yes
11	SR 2248 - East Fork Dr	080-Rowan	40002248	0.00	0.18	SR 2380 St. Luke's Ch Rd	EOM	0.18	20	Seal - Double and Fog Seal	2,110	1,055	No
12	SR 2259 - Morgan Rd	080-Rowan	40002259	0.00	3.45	SR 1004 Stokes Ferry Rd	SR 2140 Liberty Rd	3.45	20	Seal - Double and Fog Seal	40,460	20,230	Yes
13	SR 2260 - N. Fishermans LN	080-Rowan	40002260	0.00	0.25	SR 2140 St. Matthews Ch Rd	EOM	0.25	19	Seal - Double and Fog Seal	2,750	1,375	No
14	SR 2261 - South Fishermans Ln	080-Rowan	40002261	0.00	0.24	SR 2140 Liberty Rd	SR 2264 Catfish Terrace	0.24	19	Seal - Double and Fog Seal	2,690	1,345	No
15	SR 2262 - Lakeshore Dr	080-Rowan	40002262	0.00	0.43	SR 2260 N. Fishermans Ln	EOM	0.43	19	Seal - Double and Fog Seal	4,760	2,380	No
16	SR 2263 - Sunfish Terrace	080-Rowan	40002263	0.00	0.30	SR 2260 N. Fishermans Ln	SR 2262 Lakeshore Dr	0.30	18	Seal - Double and Fog Seal	3,150	1,575	No
17	SR 2264 - Catfish Terrace	080-Rowan	40002264	0.00	0.29	SR 2261 South Fishermans Ln	EOM	0.29	19	Seal - Double and Fog Seal	3,230	1,615	No
18	SR 2265 - Panfish LN	080-Rowan	40002265	0.00	0.11	SR 2262 Lakeshore Dr	SR 2263 Sunfish Terrace	0.11	16	Seal - Double and Fog Seal	990	495	No
19	SR 2266 - Chaparral Dr	080-Rowan	40002266	0.00	0.46	SR 1002 Bringle Ferry Rd	EOM	0.46	18	Seal - Double and Fog Seal	4,860	2,430	No
20	SR 2370 - St Peters Ch Rd	080-Rowan	40002370	1.79	4.44	SR 2343 Lower Palmer Rd	US 52	2.65	20	Seal - Mat & Seal w/ Fog	31,090	24,872	Yes
21	SR 2371 - King Rd	080-Rowan	40002371	0.00	1.43	SR 2370 St Peters Ch Rd	SR 2370 St Peters Ch Rd	1.43	18	Seal - Double and Fog Seal	15,110	7,555	Yes
22	SR 2379 - St Lukes Ch Rd	080-Rowan	40002379	0.00	0.66	SR 2377 Barger Rd	SR 2380 Oddie Rd	0.66	20	Seal - Double and Fog Seal	7,730	3,865	No
23	SR 2380 - Oddie Rd	080-Rowan	40002380	1.59	3.01	SR 2379 St Lukes Ch Rd	SR 1004 Stokes Ferry Rd	1.42	20	Seal - Double and Fog Seal	16,650	8,325	Yes
24	SR 2384 - Pan Handle Rd	080-Rowan	40002384	0.00	1.34	SR 2366 Hill Rd	SR 2384 Pan Handle Rd	1.34	18	Seal - Double and Fog Seal	14,180	7,090	Yes
25	SR 2457 - Miracle Dr	080-Rowan	40002457	0.00	0.81	SR 2380 St. Luke's Ch Rd	SR 2380 St. Luke's Ch Rd	0.81	20	Seal - Double and Fog Seal	9,490	4,745	No
26	SR 2729 - Sorrow Farm Rd	080-Rowan	40002729	0.00	0.33	SR 1360 Smith Rd	EOM	0.33	20	Seal - Double and Fog Seal	3,810	1,905	No
27	SR 2774 - Forest View Dr	080-Rowan	40002774	0.00	0.17	SR 1360 Enochville Sch Rd	EOM	0.17	20	Seal - Double and Fog Seal	2,040	1,020	No

Totals	
Total Map Length	34.73 mi.
Seal - Double and Fog Seal	225,170 SY
Seal - Mat & Seal w/ Fog	152,140 SY

Liquid AC	Rate	Total
Seal - Double and Fog Seal	0.50	112,585 Gal.
Seal - Mat & Seal w/ Fog	0.80	121,712 Gal.

Rowan County  
AST Contract Maps

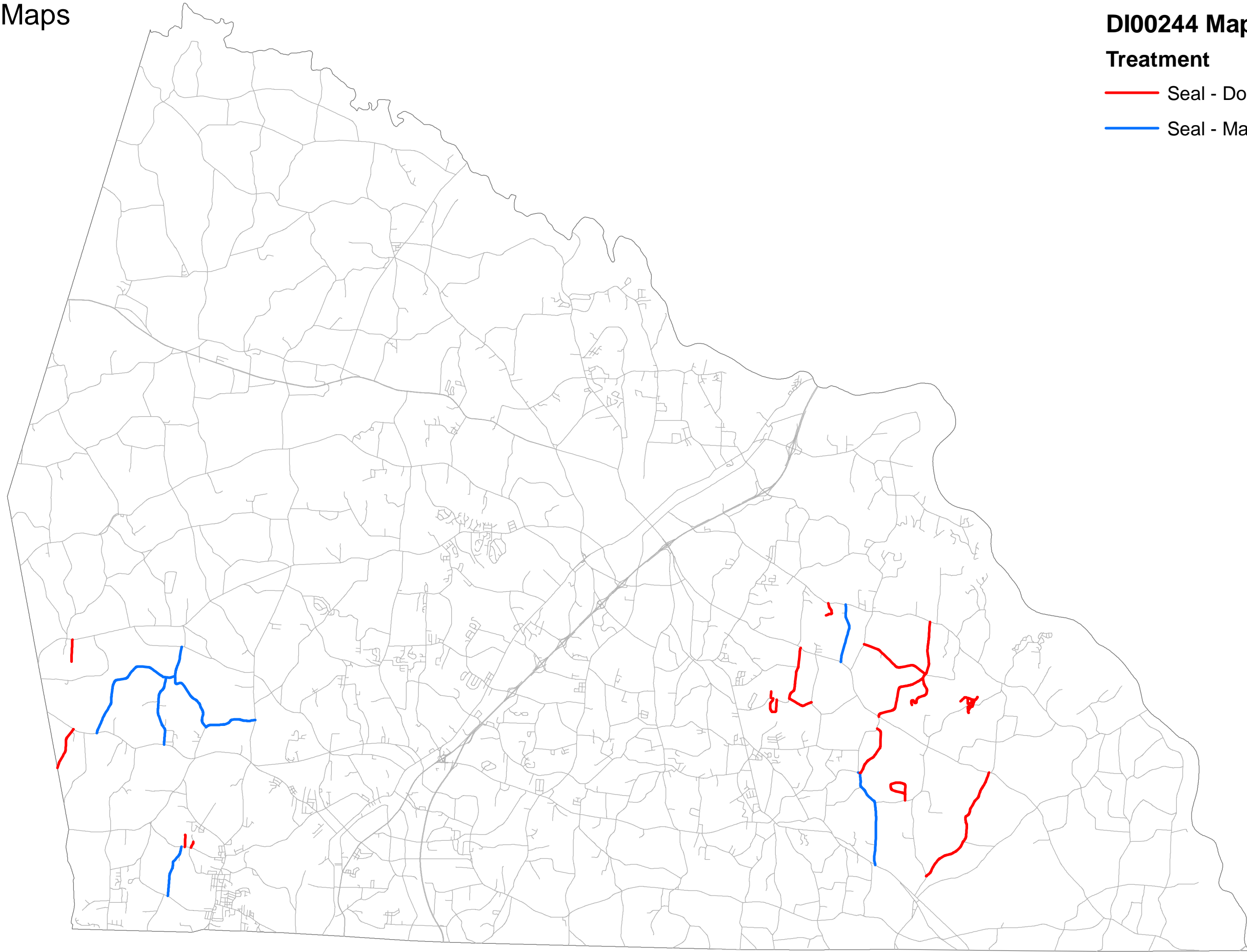
**Legend**

**DI00244 Maps**

**Treatment**

— Seal - Double and Fog Seal

— Seal - Mat & Seal and Fog Seal





# Rowan County AST Contract Maps

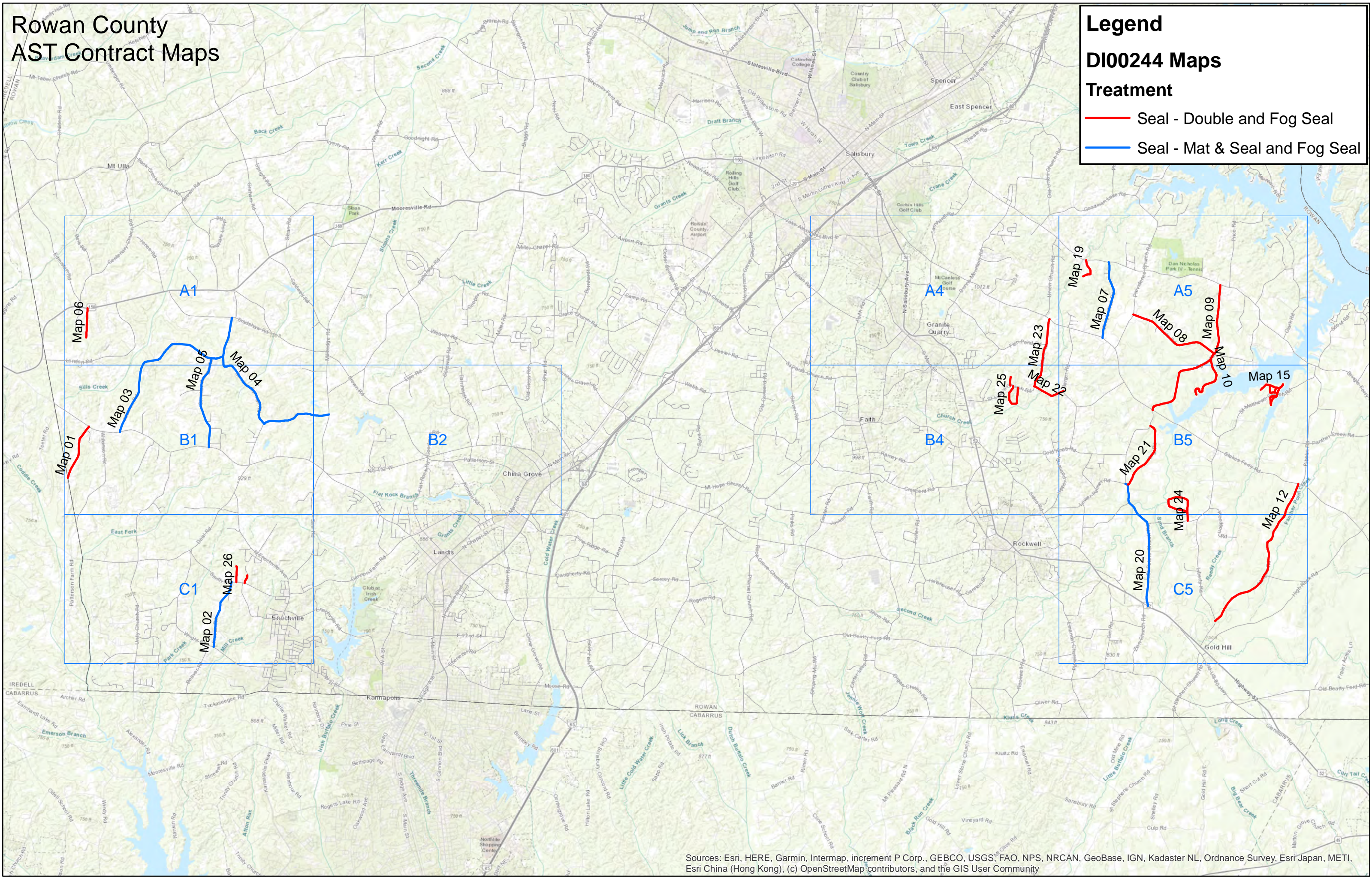
## Legend

### DI00244 Maps

#### Treatment

— Seal - Double and Fog Seal

— Seal - Mat & Seal and Fog Seal



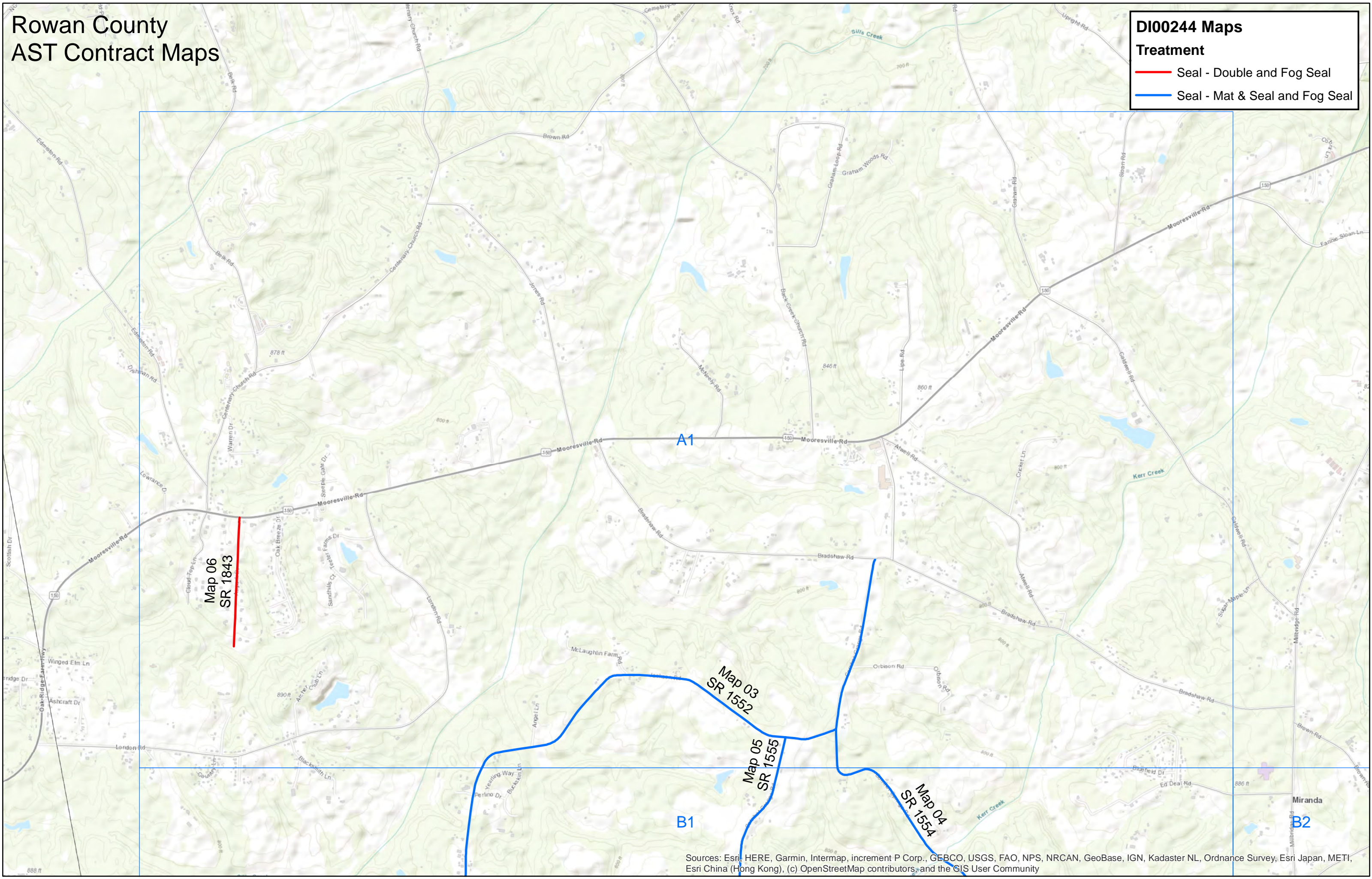


# Rowan County AST Contract Maps

## DI00244 Maps

### Treatment

- Seal - Double and Fog Seal
- Seal - Mat & Seal and Fog Seal



A1

B1

B2

Map 06  
SR 1843

Map 03  
SR 1552

Map 05  
SR 1555

Map 04  
SR 1554

Miranda



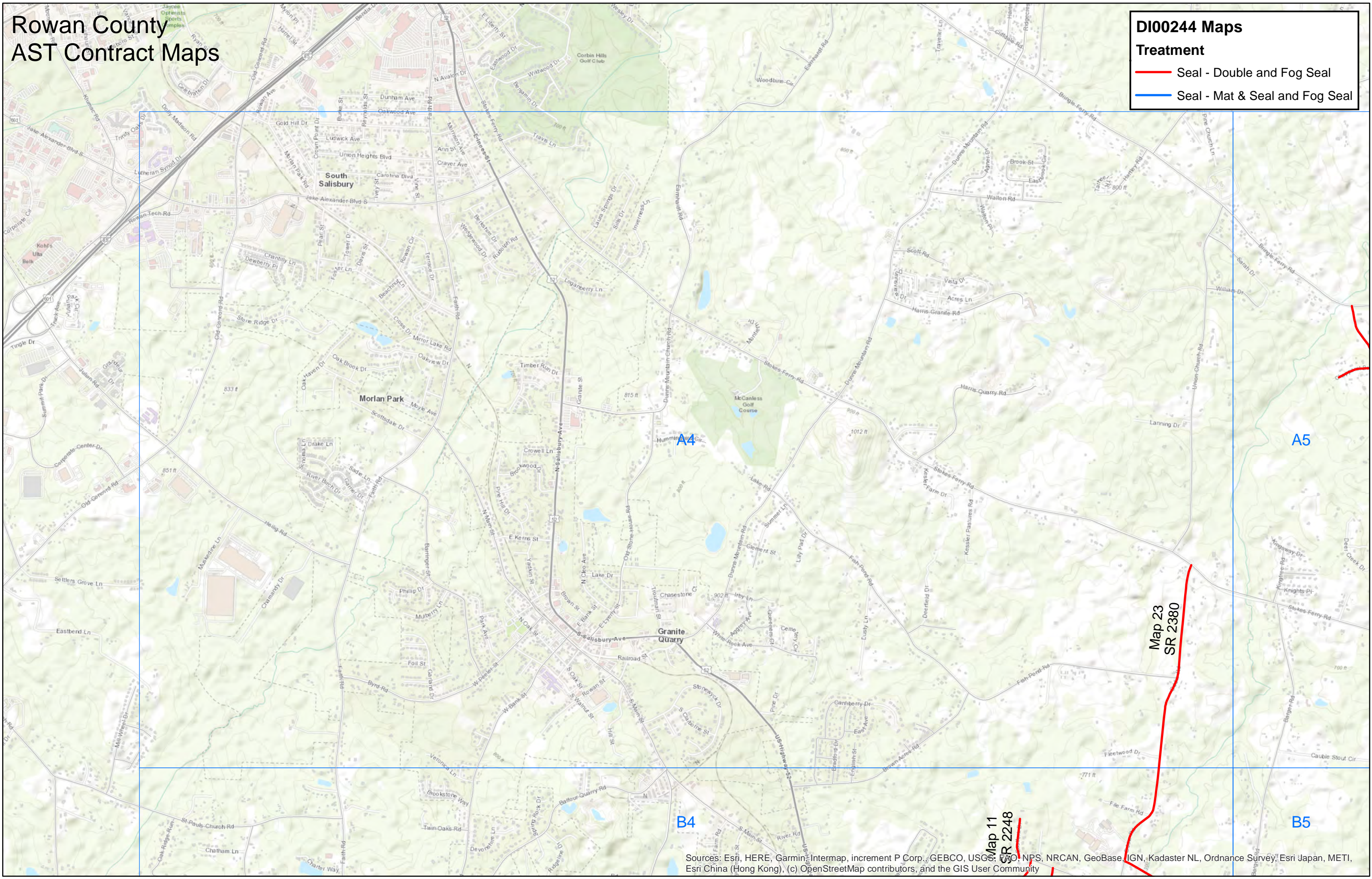
# Rowan County AST Contract Maps

## DI00244 Maps

### Treatment

— Seal - Double and Fog Seal

— Seal - Mat & Seal and Fog Seal



Sources: Esri, HERE, Garmin, Intermap, increment P Corp., GEBCO, USGS, FAO, NPS, NRCAN, GeoBase, IGN, Kadaster NL, Ordnance Survey, Esri Japan, METI, Esri China (Hong Kong), (c) OpenStreetMap contributors, and the GIS User Community

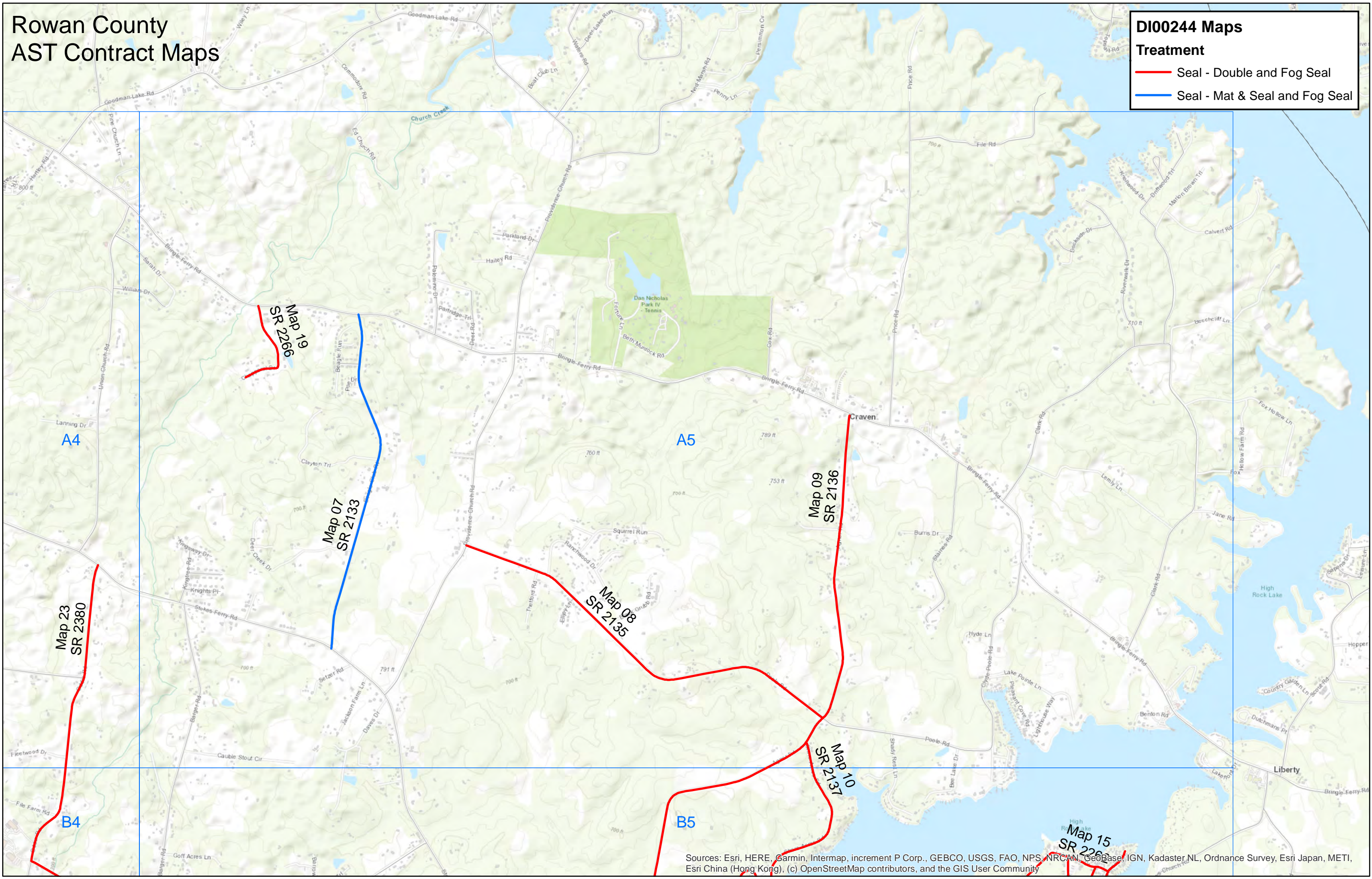


# Rowan County AST Contract Maps

## DI00244 Maps

### Treatment

- Seal - Double and Fog Seal
- Seal - Mat & Seal and Fog Seal



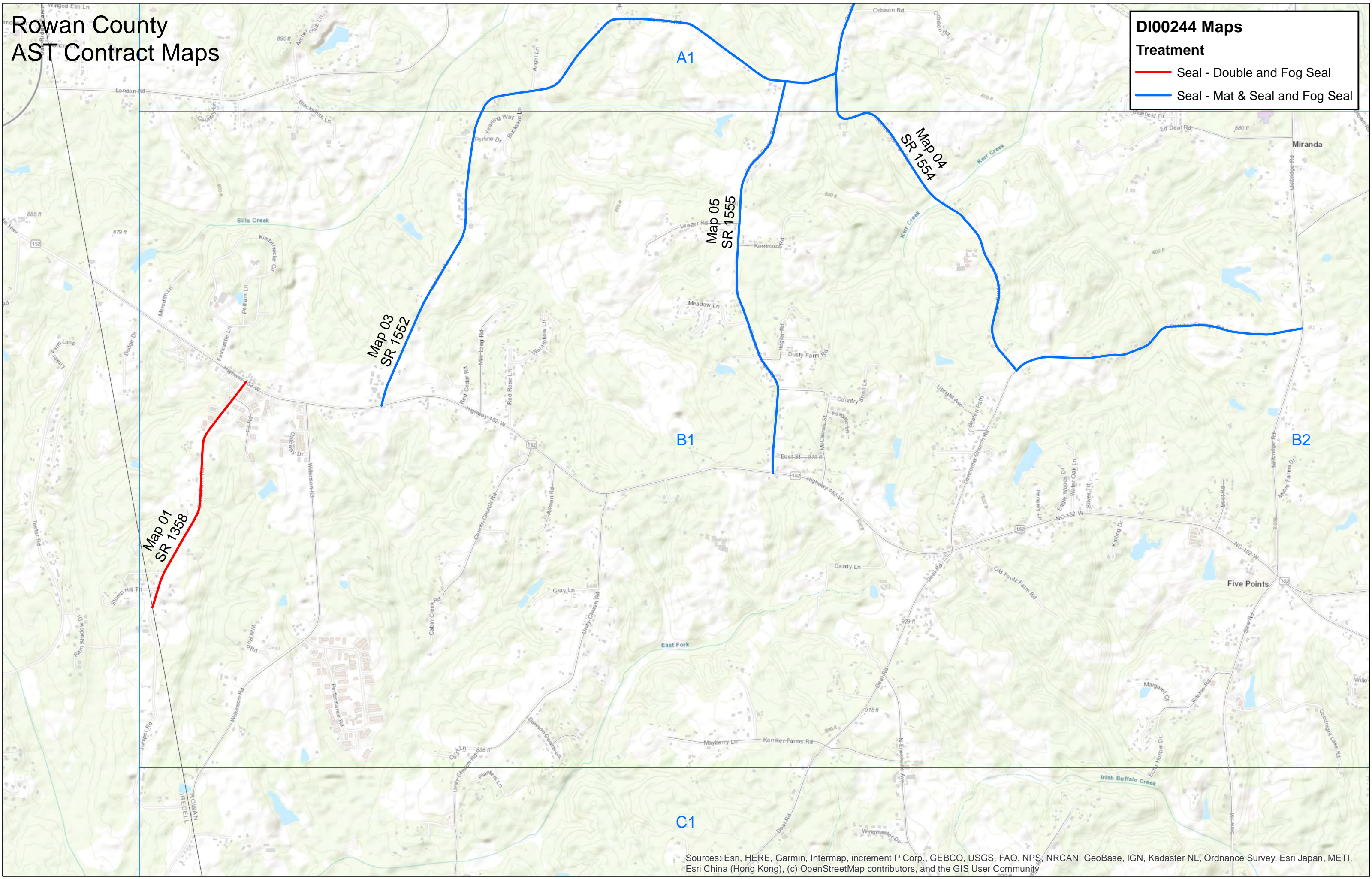


# Rowan County AST Contract Maps

## DI00244 Maps

### Treatment

- Seal - Double and Fog Seal
- Seal - Mat & Seal and Fog Seal



Sources: Esri, HERE, Garmin, Intermap, increment P Corp., GEBCO, USGS, FAO, NPS, NRCAN, GeoBase, IGN, Kadaster NL, Ordnance Survey, Esri Japan, METI, Esri China (Hong Kong), (c) OpenStreetMap contributors, and the GIS User Community

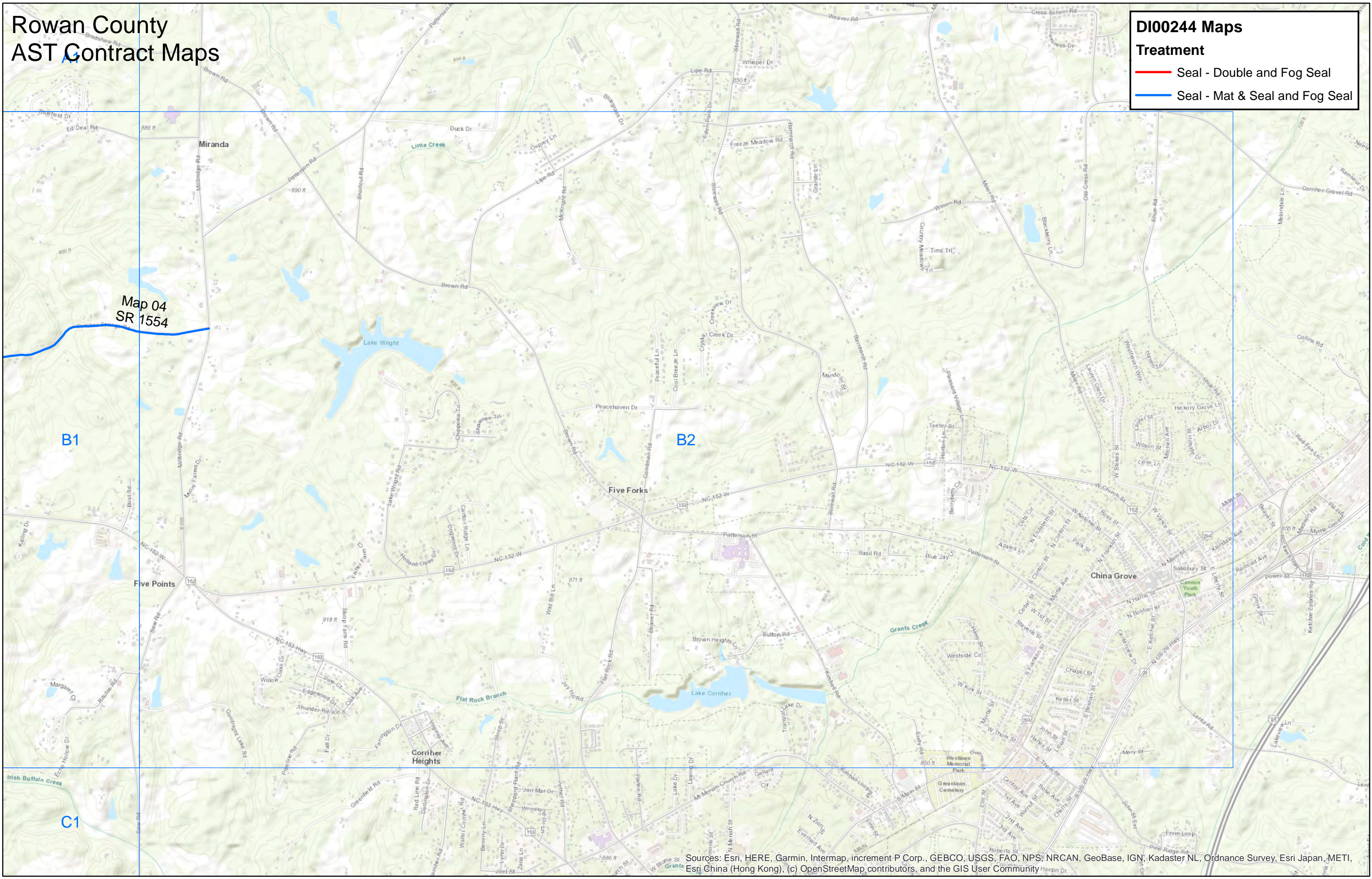


# Rowan County AST Contract Maps

## DI00244 Maps

### Treatment

- Seal - Double and Fog Seal
- Seal - Mat & Seal and Fog Seal



Sources: Esri, HERE, Garmin, Intermap, increment P Corp., GEBCO, USGS, FAO, NPS, NRCAN, GeoBase, IGN, Kadaster NL, Ordnance Survey, Esri Japan, METI, Esri China (Hong Kong), (c) OpenStreetMap contributors, and the GIS User Community

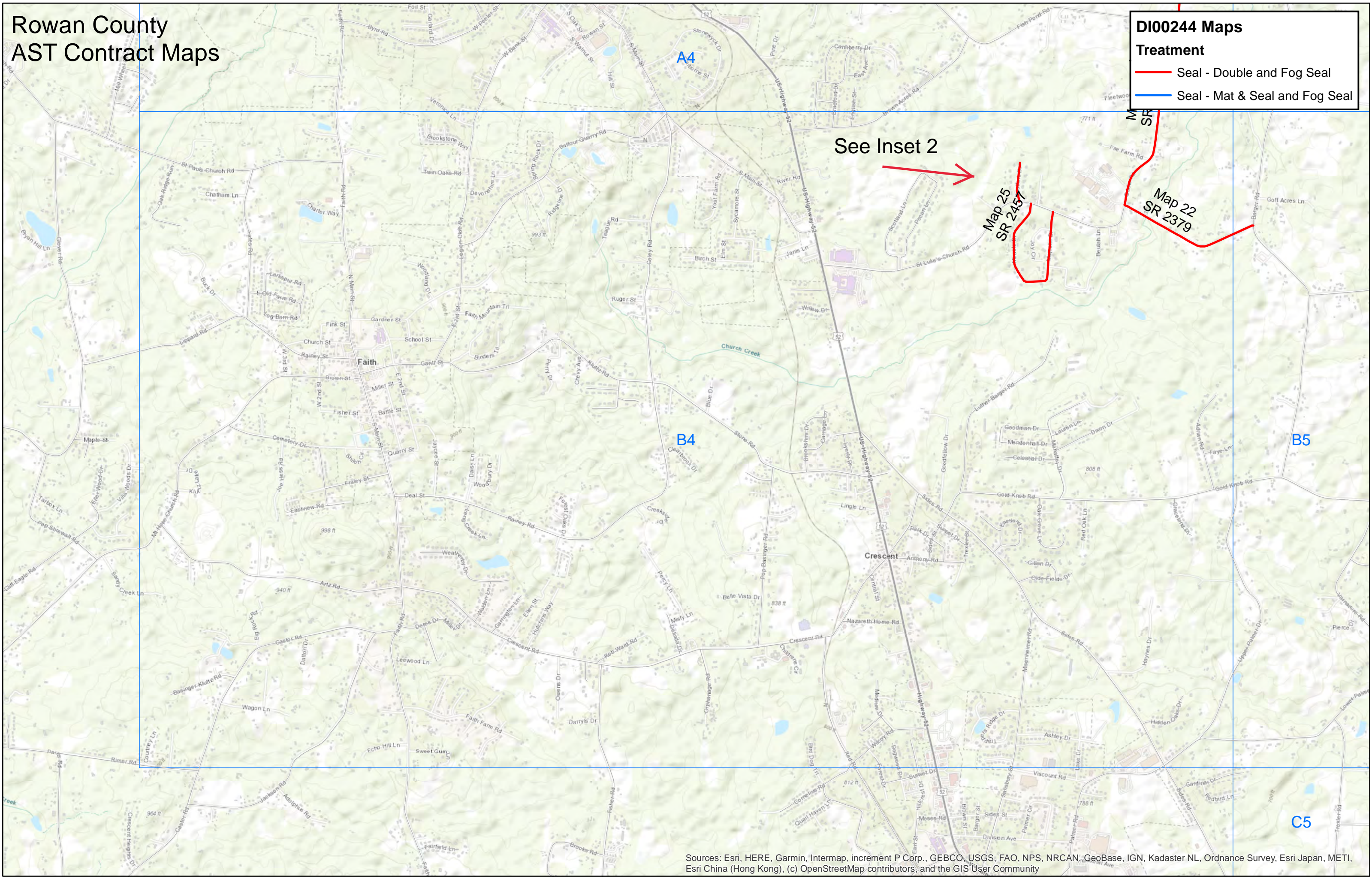


# Rowan County AST Contract Maps

## DI00244 Maps

### Treatment

- Seal - Double and Fog Seal
- Seal - Mat & Seal and Fog Seal



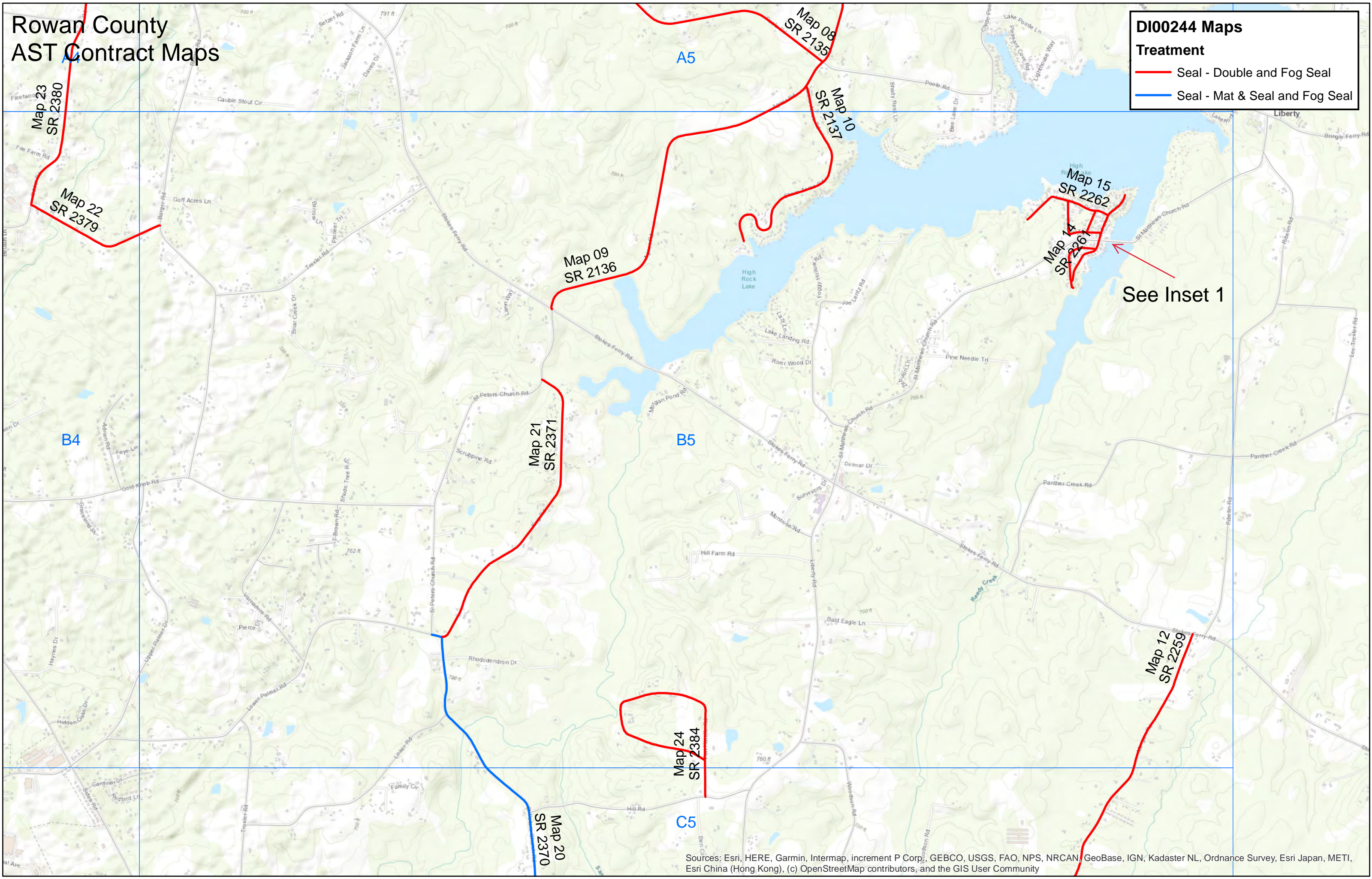
Sources: Esri, HERE, Garmin, Intermap, increment P Corp., GEBCO, USGS, FAO, NPS, NRCAN, GeoBase, IGN, Kadaster NL, Ordnance Survey, Esri Japan, METI, Esri China (Hong Kong), (c) OpenStreetMap contributors, and the GIS User Community



# Rowan County AST Contract Maps

**DI00244 Maps**  
**Treatment**

- Seal - Double and Fog Seal
- Seal - Mat & Seal and Fog Seal





See Inset 1

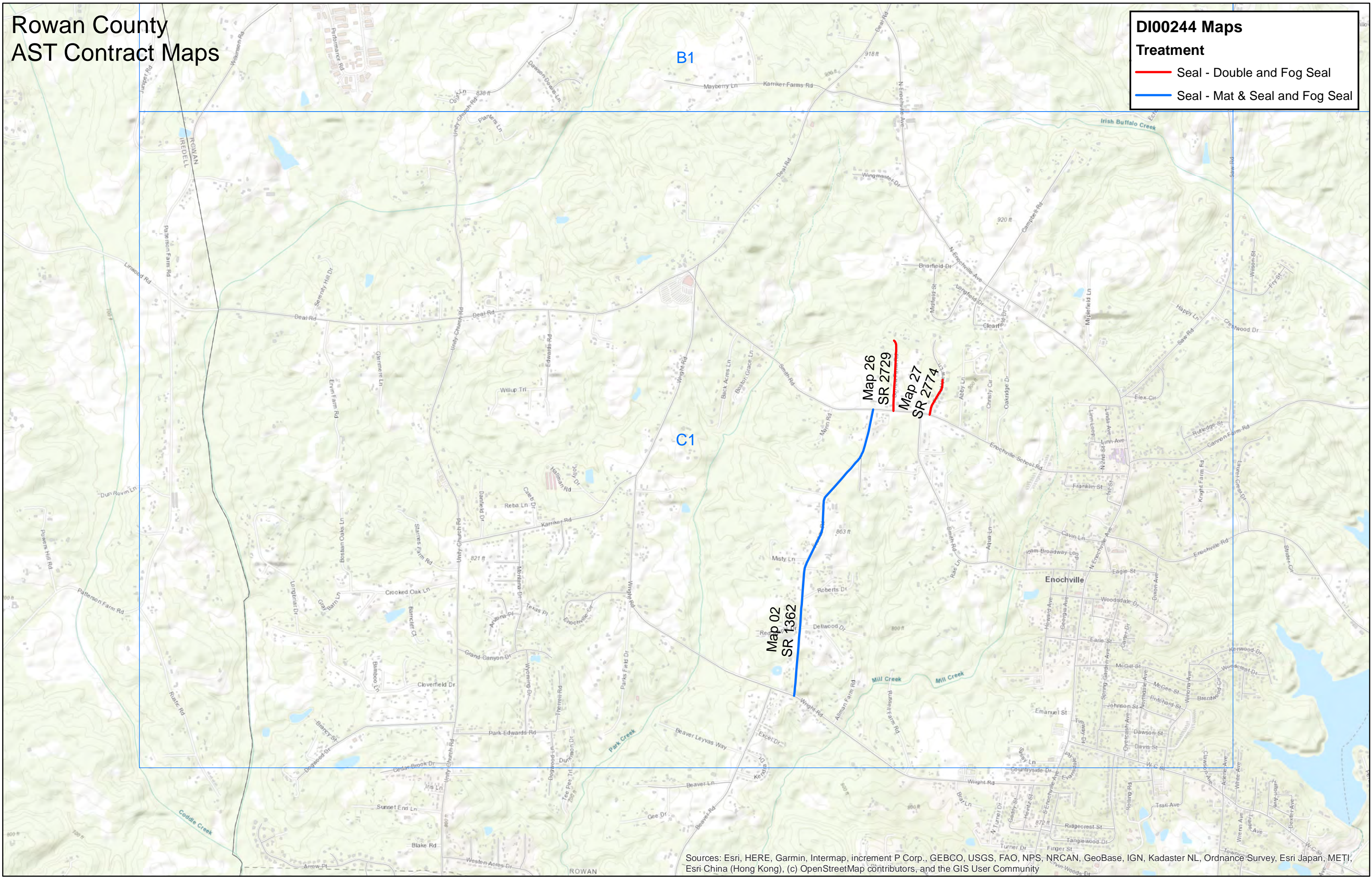


# Rowan County AST Contract Maps

## DI00244 Maps

### Treatment

-  Seal - Double and Fog Seal
-  Seal - Mat & Seal and Fog Seal



B1

C1

Map 26  
SR 2729

Map 27  
SR 2774

Map 02  
SR 1362

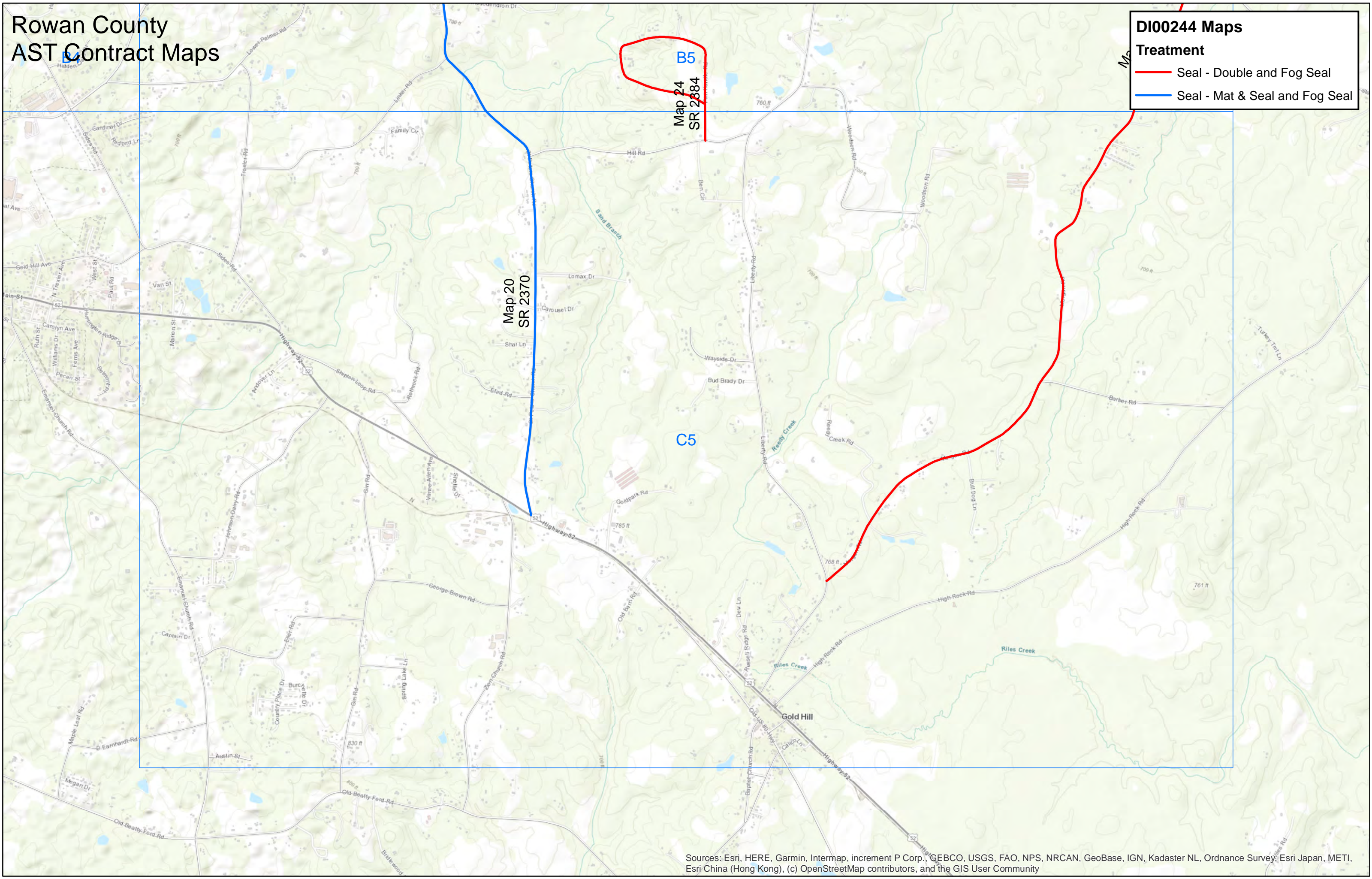


# Rowan County AST Contract Maps

## DI00244 Maps

### Treatment

- Seal - Double and Fog Seal
- Seal - Mat & Seal and Fog Seal





# Rowan County AST Contract Maps

## Inset 1

### DI00244 Maps

#### Treatment

- Seal - Double and Fog Seal
- Seal - Mat & Seal and Fog Seal





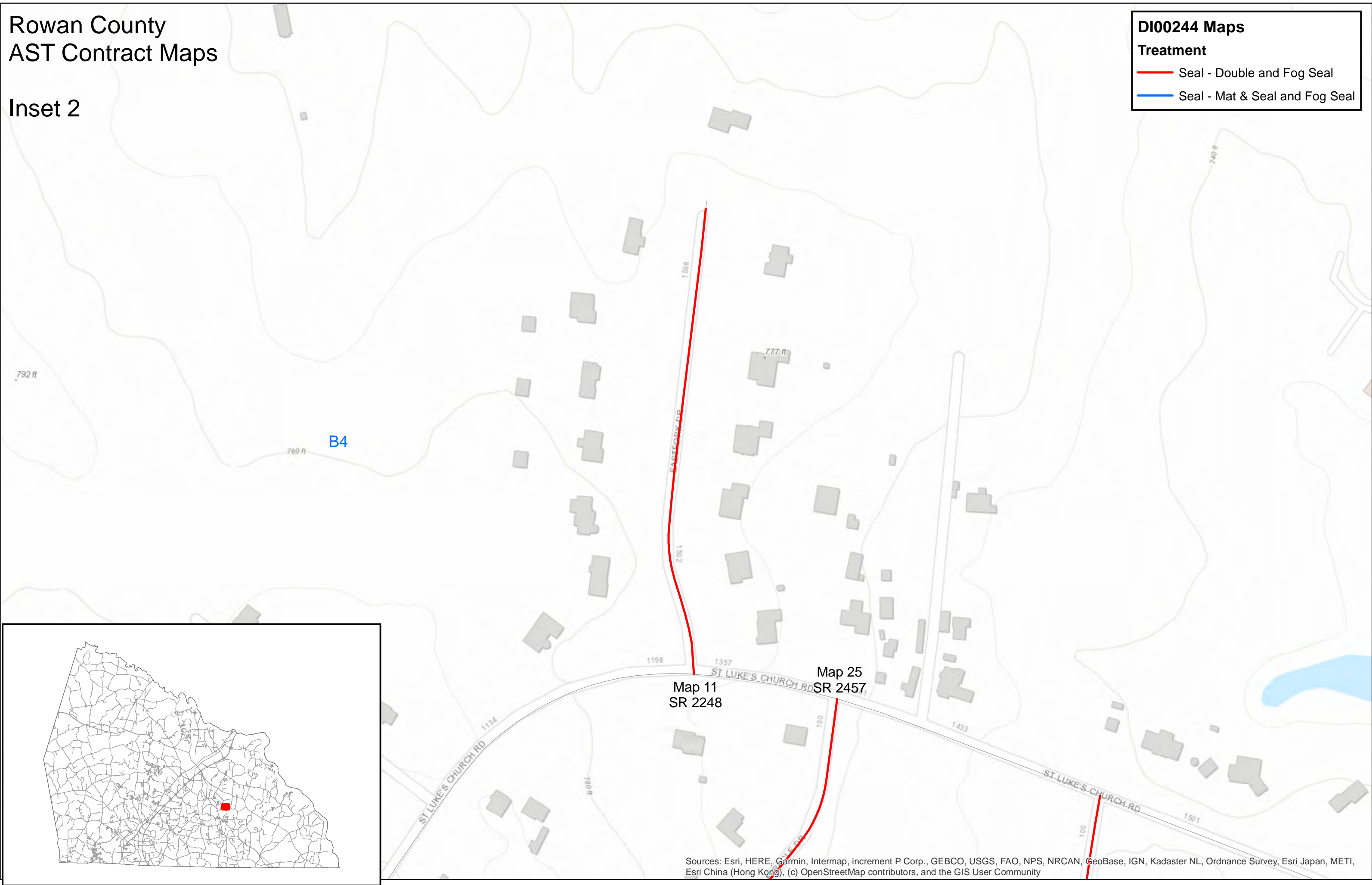
# Rowan County AST Contract Maps

## Inset 2

### DI00244 Maps

#### Treatment

- Seal - Double and Fog Seal
- Seal - Mat & Seal and Fog Seal

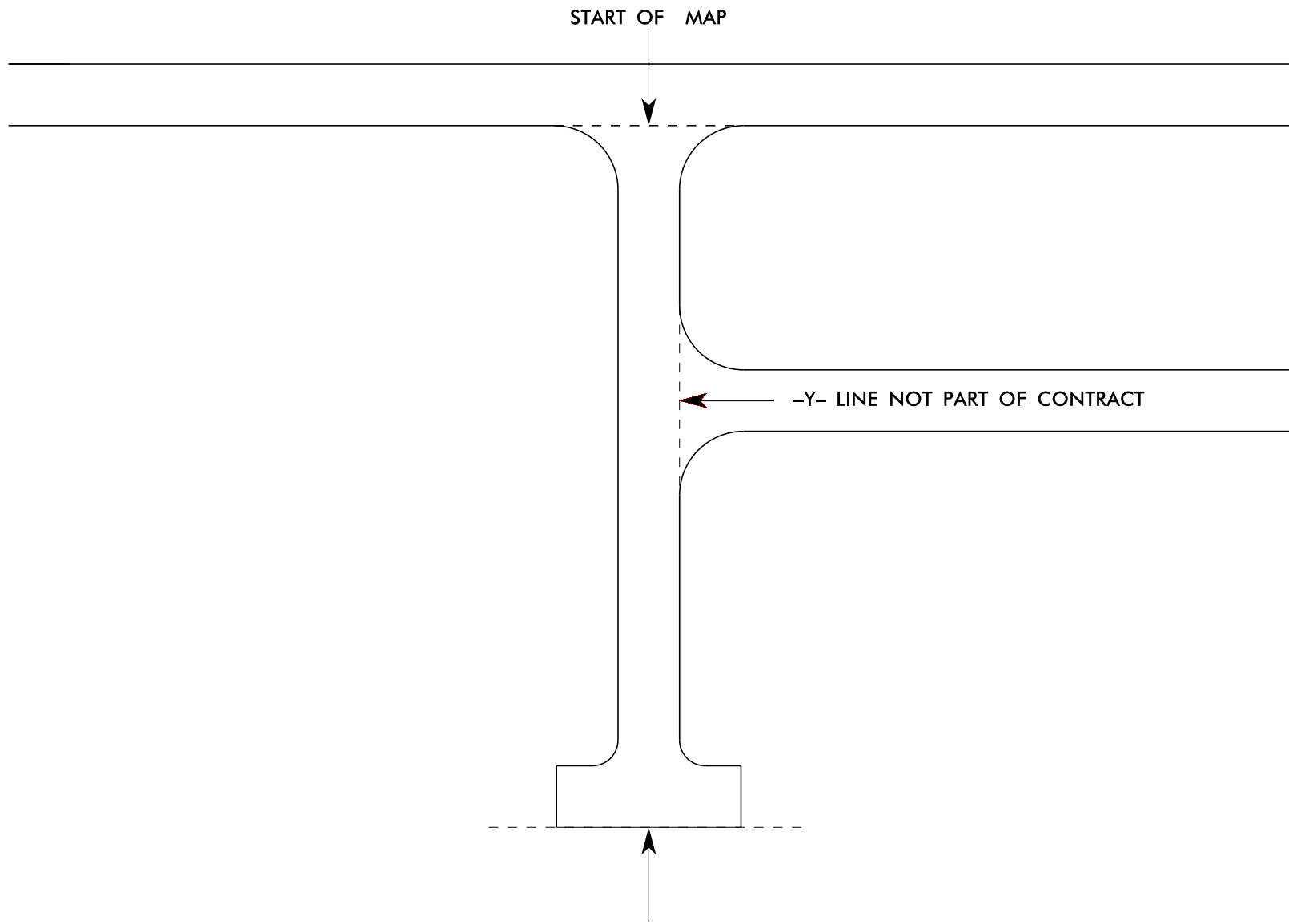


Sources: Esri, HERE, Garmin, Intermap, increment P Corp., GEBCO, USGS, FAO, NPS, NRCAN, GeoBase, IGN, Kadaster NL, Ordnance Survey, Esri Japan, METI, Esri China (Hong Kong), (c) OpenStreetMap contributors, and the GIS User Community



PROJECT REFERENCE NO.

SHEET NO.

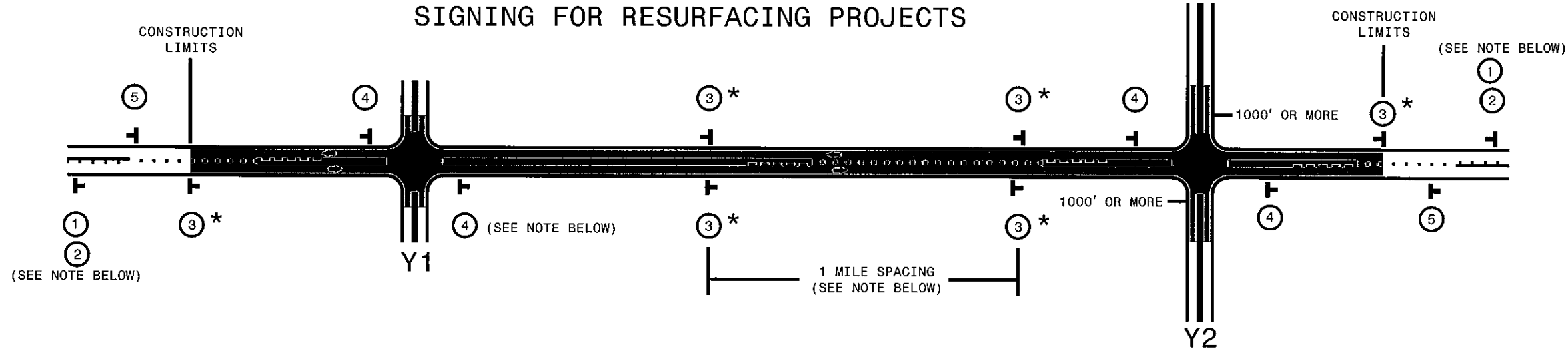


THE PROJECT PLANS DENOTE ALL ROAD TERMINUS AS END OF MAINTENANCE: THIS IS INTENDED TO DESCRIBE ANY TYPE GEOMETRY THAT MAY EXIST, INCLUDING CUL-DE-SAC, T-TURN, L-TURN, TRANSITION TO UNPAVED, TRANSITION TO PRIVATE ROAD, ETC.

Y-LINE TIE IN DETAIL



# SIGNING FOR RESURFACING PROJECTS



LEGEND	
	PORTABLE WORK ZONE SIGN (1110.02)
	DIRECTION OF TRAFFIC FLOW

## MAINLINE (-L-) SIGNING

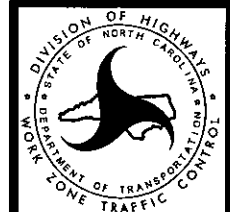
## -Y- LINE SIGNING

SIGNING NOTES AND PLACEMENT PER DIRECTION	 	<p>PLACE 1000' PRIOR TO BEGINNING OF CONSTRUCTION LIMITS. ONLY USED ON -Y- LINES IF RESURFACING LIMITS EXTEND 1000' ALONG -Y- LINE.</p> <p>#2 SIGN ONLY USED WHEN RESURFACING LIMITS ARE 2 OR MORE MILES IN LENGTH. ROUND UP TO NEXT WHOLE NUMBER. (NO FRACTIONAL OR DECIMAL NUMBERS)</p>	<p>NO REQUIRED STATIONARY SIGNING FOR THE FOLLOWING -Y- LINE CONDITIONS:</p> <ol style="list-style-type: none"> <li>1) LESS THAN 1000' OF RESURFACING ALONG -Y- LINE</li> <li>2) SUBDIVISION ROADS</li> <li>3) DEAD END ROADS</li> </ol> <p>WHEN PAVING/CONSTRUCTION ACTIVITIES PROCEED ACROSS AN UNSIGNED -Y- LINE, ADVANCE WARNING PORTABLE SIGNS SHALL BE USED ALONG THE -Y- LINE AS SHOWN BELOW. REMOVE UPON COMPLETION OF WORK.</p> <div style="display: flex; justify-content: space-around;"> <div style="text-align: center;">   <small>W20-1 48" X 48"</small> </div> <div style="text-align: center;">   <small>W20-7 A 48" X 48"</small> </div> </div> <p>PLACED 500' IN ADVANCE OF FLAGGER. PLACED 250' IN ADVANCE OF FLAGGER.</p>
		<p>PLACE INITIALLY AT THE CONSTRUCTION LIMITS AND SPACE 1 MILE APART THEREAFTER. IF NO -Y- LINES EXIST, PLACE 2ND SET 1/2 MILE FROM THE CONSTRUCTION LIMITS AND THEN SPACE 1 MILE THEREAFTER.</p> <p>STANDARD DRAWING 1110.01 STATIONARY WORK ZONE SIGNS</p>	
		<ul style="list-style-type: none"> <li>- THESE ARE FOR -Y- LINES THAT ARE "THROUGH" ROADWAYS.</li> <li>- DEAD END AND SUBDIVISION ROADS ARE NOT "THROUGH" ROADWAYS.</li> <li>- INSTALL 500' +/- FROM EACH -Y- LINE APPROACH AS SHOWN ABOVE.</li> <li>- FOR MULTIPLE -Y- LINES THAT ARE SEPARATED BY 0.25 MILES OR LESS, TREAT AS A SINGLE UNIT AND INSTALL WITHIN 500' OF EACH APPROACH.</li> <li>- A MAXIMUM OF 2 SIGN SETS PER MILE. DO NOT INSTALL WHEN -Y- LINES ARE WITHIN 0.5 MILES FROM "END ROAD WORK" SIGN.</li> </ul>	
		<p>PLACE 500' FOLLOWING THE END OF CONSTRUCTION LIMITS OR AS SHOWN WHEN WORK ENDS AT A 3-WAY TEE INTERSECTION. (OPTIONAL)</p>	

### \* SIGNING FOR ASPHALT SURFACE3 TREATMENTS (ONLY)

SUBSTITUTE LOW/SOFT SHOULDER SIGNS BY ALTERNATING THE FOLLOWING TWO SIGNS: STARTING WITH "UNMARKED PAVEMENT AHEAD" (SP 06026) FOLLOWED BY "LOOSE GRAVEL" (W8-7)

STANDARD DRAWING 1110.01 STATIONARY WORK ZONE SIGNS



RESURFACING ADVANCE WARNING SIGNS FOR RURAL AND SUBURBAN 2 LANE ROADWAYS

SYSTEMTIME: 11/15/2005 10:00:00 AM  
 USERNAME: D:\CNC\...